

Chihchun Chi-sun Lee

**Nostalgia 1991**

**【再見 1991】**

*for* Dadi, Erhu, Yangqin, Gaoyin Ruan/Liuqin, Pipa and Zheng  
(2022)

 財團法人 | 國家文化藝術 | 基金會

Funded by the Taiwan National Cultural and Arts Foundation

**【再見 1991】** “*Nostalgia 1991*” *Dadi, Erhu, Yangqin, Gaoyin Ruan/Liuqin, Pipa and Zheng*

Program Notes:

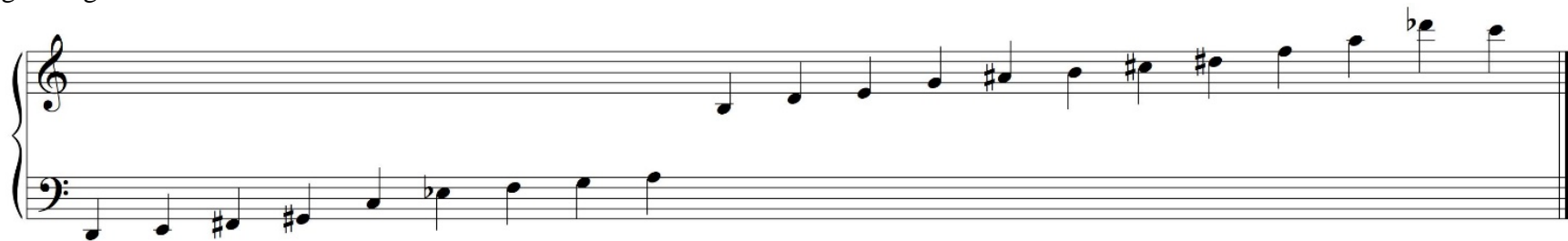
*Nostalgia 1991* is written for the celebration of the long collaboration with Chai Found Music Workshop (CFMW), the pioneer Chinese silk and bamboo ensemble from Taiwan who specializes in contemporary music since 1991. Over past three decades, I have written twenty compositions for Chai Found Music Workshop, that includes most of my earliest works and a series of pieces based on Taiwanese historical monuments while served as a composer-in-residence with CFMW. *Nostalgia 1991* is a landmark that utilizes motivic ideas from these compositions that I wrote for CFMW. This work is commissioned by CFMW, funded by the Taiwan National Arts and Culture Foundation.

樂曲解說:

再見 1991 是爲了紀念與采風樂坊從 1991 年至今長久的友誼及合作關係所創作的作品。其中將重點式地採取和運用來自於曾經為采風樂坊所創作的作品中之元素及動機，再加以整合及發展。並且將曾經一起走過的路，在世界各地不同國家演出作品的經歷，引用音樂的方式來敘述及詮釋共同經歷的一些里程碑。本作品由財團法人國家文化藝術基金會贊助。

Performance Notes:

Zheng tuning



# Nostalgia 1991

for Dadi, Erhu, Yangqin, Gaoyin Ruan/Liuqin, Pipa and Zheng

Chihchun Chi-sun Lee

Score

♩ = 56

Dadi

Musical notation for Dadi in 6/4 time. It begins with a treble clef, a key signature of one sharp (F#), and a tempo of 56. The first measure contains a half note G4 with a fermata and a wavy line above it. The second measure contains a half note A4 with a fermata and a wavy line above it. The piece then transitions to 4/4 time, with the next three measures containing whole rests. The final measure is in 5/4 time and contains a whole rest.

Erhu

Musical notation for Erhu in 6/4 time. It begins with a treble clef, a key signature of one sharp (F#), and a tempo of 56. The first two measures contain whole rests. The third measure contains a quarter note G4, a quarter note A4, and a quarter note B4, with a fermata and a wavy line above it. The fourth measure contains a half note C5 with a fermata and a wavy line above it. The piece then transitions to 4/4 time, with the next three measures containing whole rests. The final measure is in 5/4 time and contains a quarter note G4, a quarter note A4, and a quarter note B4.

Yangqin

Musical notation for Yangqin in 6/4 time. It begins with a treble clef, a key signature of one sharp (F#), and a tempo of 56. The first two measures contain whole rests. The third measure contains a quarter note G4, a quarter note A4, and a quarter note B4, with a fermata and a wavy line above it. The fourth measure contains a half note C5 with a fermata and a wavy line above it. The piece then transitions to 4/4 time, with the next three measures containing whole rests. The final measure is in 5/4 time and contains a whole rest.

(use finger to pluck strings)  
(option: use metal finger cup to create bending sound)

press the string up & down

L.V.

pick up mallets

Gaoyin Ruan/  
Liuqin

Musical notation for Gaoyin Ruan/Liuqin in 6/4 time. It begins with a treble clef, a key signature of one sharp (F#), and a tempo of 56. The first two measures contain whole rests. The third measure contains a quarter note G4, a quarter note A4, and a quarter note B4, with a fermata and a wavy line above it. The fourth measure contains a half note C5 with a fermata and a wavy line above it. The piece then transitions to 4/4 time, with the next three measures containing whole rests. The final measure is in 5/4 time and contains a quarter note G4, a quarter note A4, and a quarter note B4.

Pipa

Musical notation for Pipa in 6/4 time. It begins with a treble clef, a key signature of one sharp (F#), and a tempo of 56. The first two measures contain whole rests. The third measure contains a quarter note G4, a quarter note A4, and a quarter note B4, with a fermata and a wavy line above it. The fourth measure contains a half note C5 with a fermata and a wavy line above it. The piece then transitions to 4/4 time, with the next three measures containing whole rests. The final measure is in 5/4 time and contains a whole rest.

Zheng

Musical notation for Zheng in 6/4 time. It begins with a treble clef, a key signature of one sharp (F#), and a tempo of 56. The first two measures contain whole rests. The third measure contains a quarter note G4, a quarter note A4, and a quarter note B4, with a fermata and a wavy line above it. The fourth measure contains a half note C5 with a fermata and a wavy line above it. The piece then transitions to 4/4 time, with the next three measures containing whole rests. The final measure is in 5/4 time and contains a quarter note G4, a quarter note A4, and a quarter note B4.